



# Local Control and Accountability Plan

January 9, 2019

# + Outcomes



Data Overview

Current Plan

Focused Items

Steps for Input

# +California Dashboard & ESUHSD Local Control and Accountability Plan



## Goals:

1. College and Career Readiness
2. Graduation Rate
3. English Language Learners
4. Decrease Suspensions
5. Chronic Absenteeism

# + California Dashboard



[Home](#) [About](#) [State Summary](#) [Search](#) [More Information](#) [En Español](#)

## DISTRICT PERFORMANCE OVERVIEW

### East Side Union High

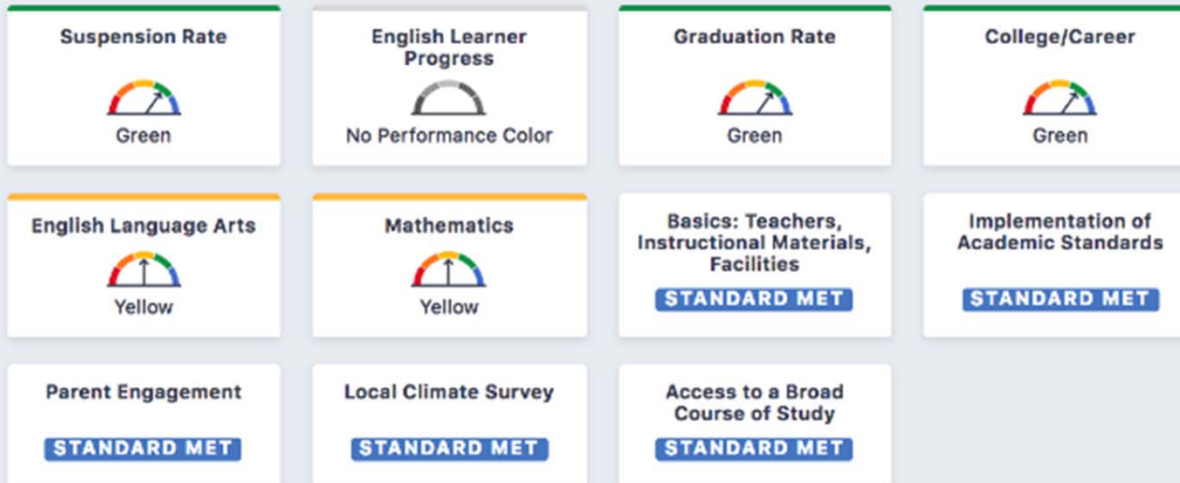
Explore the performance of East Side Union High under California's Accountability System.

[Generate PDF Report](#)

[View All Schools](#)

[View Additional Reports](#)

2018



## District Details

<b>NAME</b> East Side Union High	<b>ADDRESS</b> 830 North Capitol Avenue San Jose, CA 95133-1316	<b>WEBSITE</b> <a href="http://www.esuhsd.org">http://www.esuhsd.org</a>	<b>GRADES SERVED</b> K-Adult
-------------------------------------	---	---	---------------------------------

# + California Dashboard



## Student Group Report for 2018

Student Group	Chronic Absenteeism	Suspension Rate	Graduation Rate	College/Career	English Language Arts	Mathematics
All Students	None	Green	Green	Green	Yellow	Yellow
English Learners	None	Yellow	Yellow	Yellow	Red	Red
Foster Youth	None	Orange	Red	Red	None	None
Homeless	None	Red	Red	Yellow	Orange	Orange
Socioeconomically Disadvantaged	None	Green	Green	Green	Orange	Orange
Students with Disabilities	None	Red	Red	Red	Red	Red
African American	None	Red	Green	Orange	Orange	Orange
American Indian or Alaska Native	None	Yellow	None	None	None	None
Asian	None	Blue	Green	Blue	Green	Blue
Filipino	None	Green	Green	Orange	Green	Green
Hispanic	None	Green	Yellow	Yellow	Orange	Orange
Native Hawaiian or Pacific Islander	None	Orange	Green	Orange	None	None
White	None	Yellow	Yellow	Yellow	Green	Yellow
Two or More Races	None	Yellow	Green	Green	Green	Yellow

# + California Dashboard



East Side Union High (Santa Clara County)

[Return to Search](#)  
[View the Dashboard Report](#)

## Graduation Rate - Student Group Five-by-Five Placement

Reporting Year: 2018 **Select a Report:** 5x5 Graduation Rate Placement Report (Grades 9-12)

[View Schools Five-by-Five Report](#)

[View Detailed Data](#)

LEVEL	Declined Significantly	Declined	Maintained	Increased	Increased Significantly
Very High	Gray (N/A)	Blue (None)	Blue (None)	Blue (None)	Blue (None)
High	Orange (None)	Yellow (None)	Green • Asian	Green • Filipino	Blue (None)
Medium	Orange (None)	Orange (None)	Yellow • White	Green • All Students (District Placement) • Socioeconomically Disadvantaged • African American • Native Hawaiian or Pacific Islander • Two or More Races	Green (None)
Low	Red (None)	Orange (None)	Orange (None)	Yellow • English Learners • Hispanic	Yellow (None)
Very Low	Red (None)	Red (None)	Red • Foster Youth • Homeless	Red • Students with Disabilities	Red (None)

Note: Because the local control funding formula (LCFF) treats charter schools as districts, they are not displayed on their district's Five-by-Five Placement report. (The only exception to this rule is when a district oversees only charter schools.)

### Total Number of Student Groups in Each Performance Level

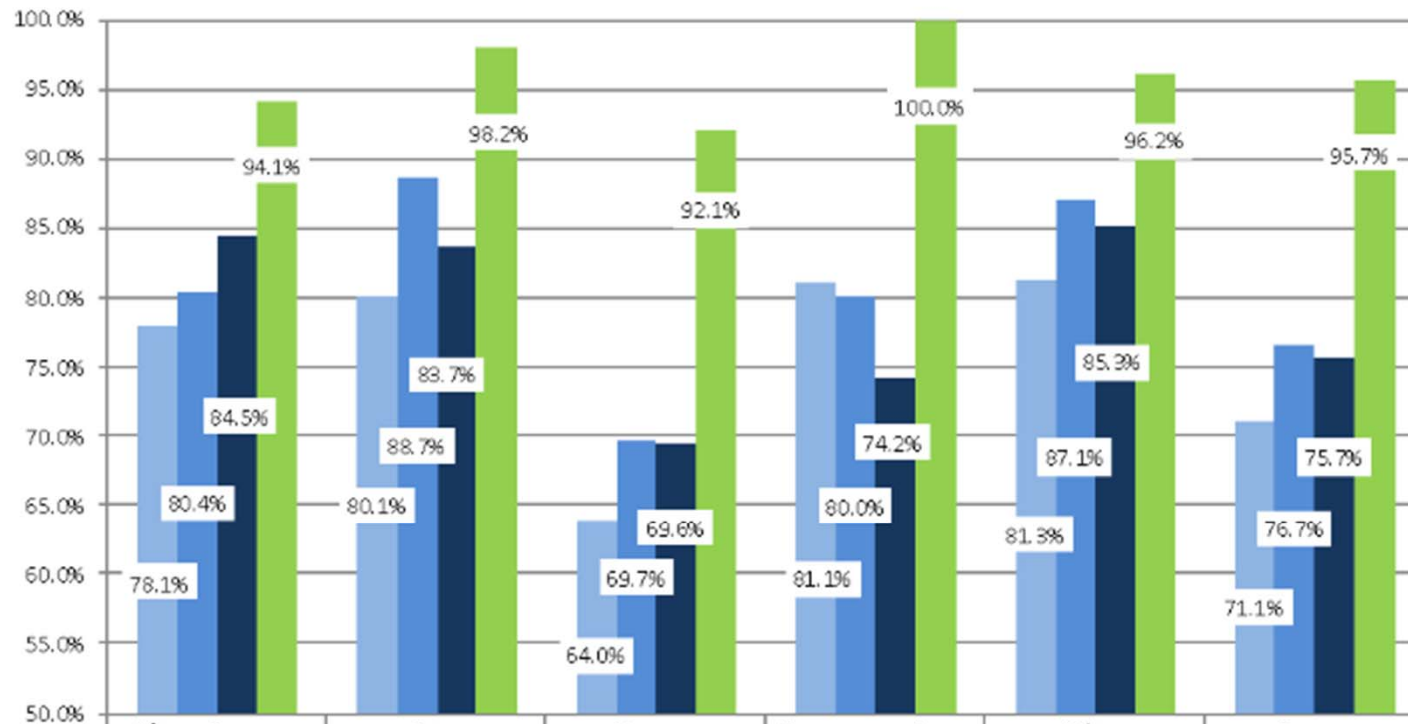
All Student Groups	Red	Orange	Yellow	Green	Blue
12	3	0	3	6	0

# +Graduation Rate



## ESUHSD 2015-16 & 2016-17 & 2017-18 Non-Cohort Grad Rate Vs Cohort Grad Rate 2016-17

\*local cohort definition was adjusted for 2017 and 2018 to incorporate early graduates and dropouts



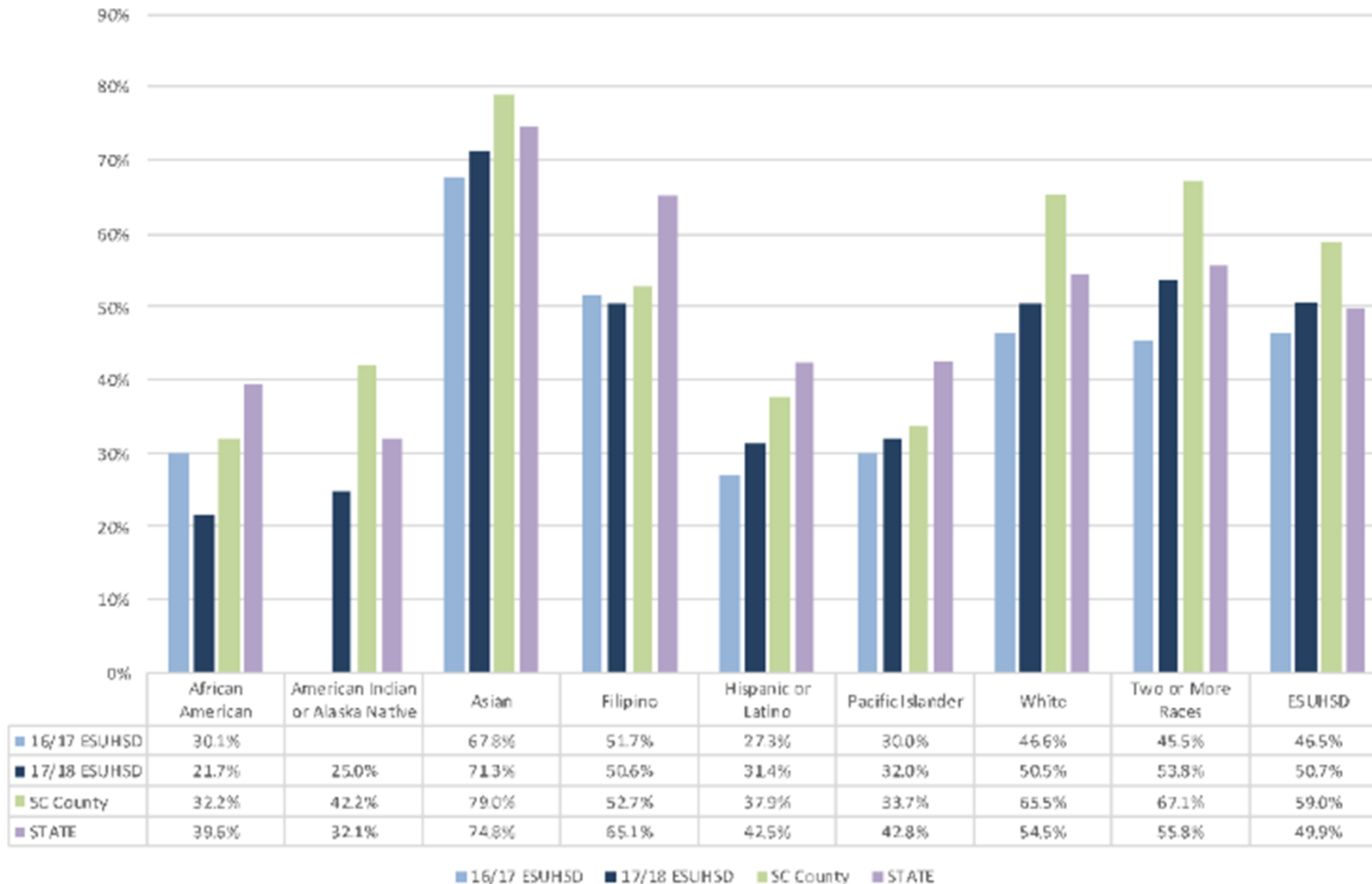
■ Non-Cohort 2015-16	78.1%	80.1%	64.0%	81.1%	81.3%	71.1%
■ *Non-Cohort 2016-17	80.4%	88.7%	69.7%	80.0%	87.1%	76.7%
■ *Non-Cohort 2017-18	84.5%	83.7%	69.6%	74.2%	85.3%	75.7%
■ *Cohort 2017-18	94.1%	98.2%	92.1%	100.0%	96.2%	95.7%



# +College and Career Readiness

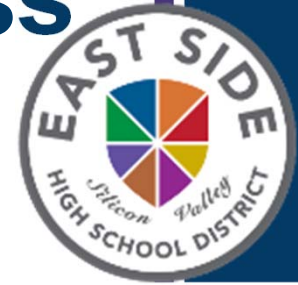


Public Adjusted 4-year Cohort Outcomes  
 2016-17 & 2017-18 Percent of Graduates Completing UC/CSU A-G Courses  
 ESUHSD, SC County, State  
 Charter Schools Not Included In District Data



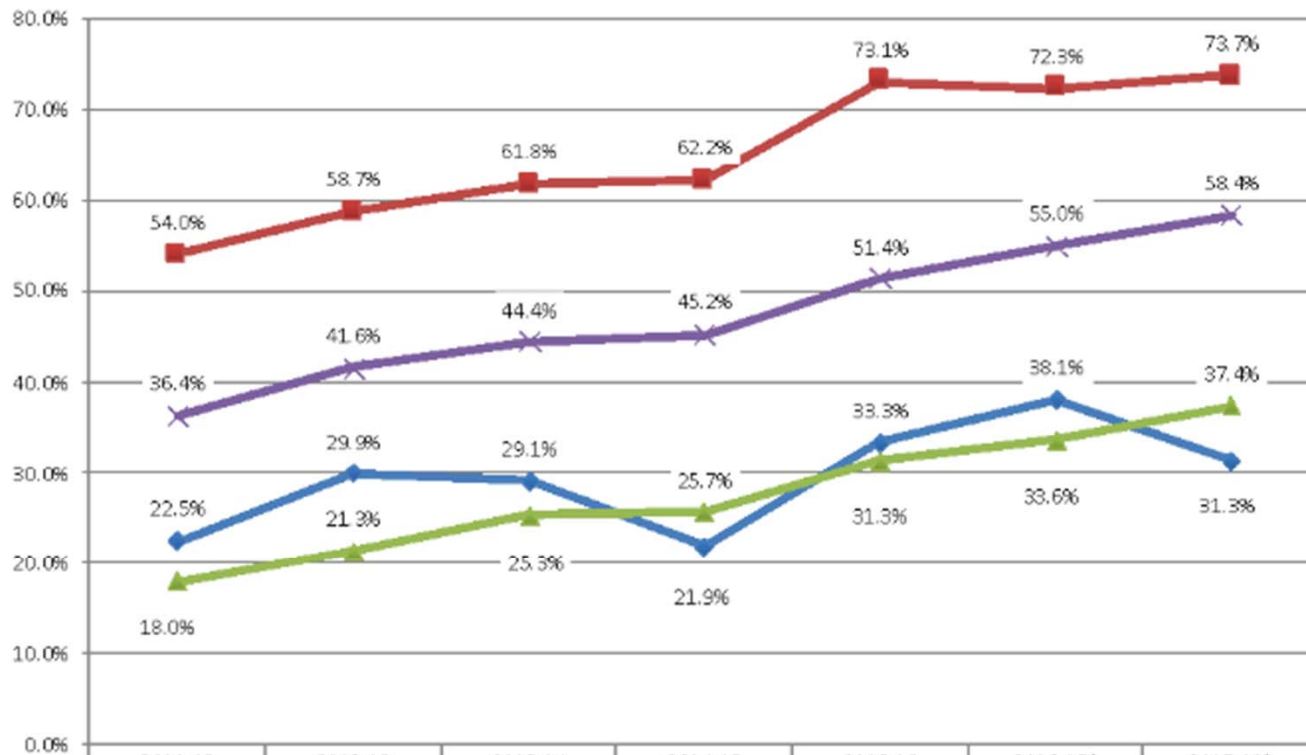


# +College and Career Readiness



**East Side Union High School District Local Cohort  
Percent of Graduates Completing UC/CSU A-G  
2012-2018**

\* local cohort definition was adjusted for 2017 and 2018 to incorporate early graduates and dropouts



	2011-12	2012-13	2013-14	2014-15	2015-16	2016-17*	2017-18*
African Amer	22.5%	29.9%	29.1%	21.9%	33.3%	38.1%	31.3%
Asian	54.0%	58.7%	61.8%	62.2%	73.1%	72.3%	73.7%
Hispanic	18.0%	21.3%	25.3%	25.7%	31.3%	33.6%	37.4%
District (no Charters)	36.4%	41.6%	44.4%	45.2%	51.4%	55.0%	58.4%

# + Local Control and Accountability Plan for 2018-2021



3 Year Rolling Plan

Goals

Actions

Metrics

Student Group(s)

Location

Funding: Amount and Source

# + Targeted Action Items for 18-19



Multi-Tiered Systems of Support

4 Year Student Plans

Public Display of Disproportionality Data

African American Student Leadership  
Network

Implicit Bias Training for All Staff

# + Input & Site Meetings for 18-19



- Community, Staff and Student Survey
- Student LCAP Advisory Committee
- DELAC/LCAP Advisory Committee
- Site Meetings

SITE	DATE	TIME	LOCATION
Evergreen	Feb 5th	6:00	Cougar Hall
Independence	Feb 5th	6:00	
Overfelt	Feb 5th	6:00	
Oak Grove	Feb 6th	6:00	Wrestling Room
Mount Pleasant	Feb 7th	6:00	
Silver Creek	Feb 7th	5:30	
Andrew Hill	Feb 7th	6:30	Cafeteria
Piedmont	Feb 11th	6:30	Library
James Lick	Feb 11th	6:00	
Calero	Feb 13th	6:00	A-110
Foothill	Feb 13th	5:00	
Santa Teresa	Feb 13th	6:00	Library
Yerba Buena	Feb 27th	6:00	